



SAGE MAS 90 SAGE MAS 200

F9 REPORT WRITER

CUSTOMERS PRAISE F9

"The ultimate in financial reporting flexibility."

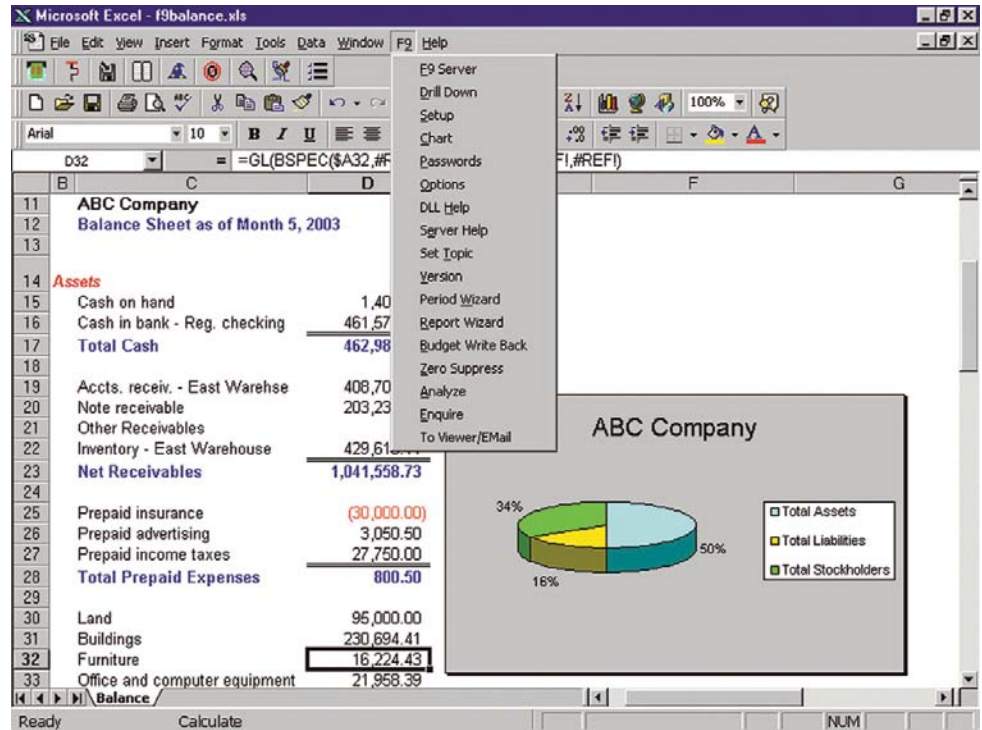
Microbits, published by
Deloitte & Touche

"For our clients who use consolidated statements and budgets, F9 is indispensable."

Roy J. Gowler, President
ACCvantage, Inc.

"I'm extremely excited to have found a product at last that will combine data integrity with polished presentation to management."

Peter Bowes, Accounting Manager
Leisure Care Retirement Communities



MTSI
Marshall Technology
Solutions, Inc.

Solutions behind your every move

- ▶ MAS 90 Software
- ▶ MAS 90 Support
- ▶ MAS 90 Training
- ▶ MAS 200 Software
- ▶ MAS 200 Support
- ▶ MAS 200 Training
- ▶ MAS 90 and MAS 200 Live Demo
- ▶ Contact Us

www.mtsisolutions.com

F9 is a Financial Reporting application, which dynamically links the Sage MAS 90 and Sage MAS 200 ERP General Ledger data to Microsoft Excel. By employing a combination of simple cell formulas in Excel, F9 allows General Ledger data in Sage MAS 90 or 200 to be formatted into any desired financial report in the flexible and powerful environment of the spreadsheet. The F9 Report Wizard allows you to go from a blank spreadsheet to a fully formatted, hot-linked report in just seconds! Follow a graphical representation and step-by-step procedure; point and click your way to a finished report, complete with F9 formulas, automatically.

F9 offers an unbeatable feature package, including drill down, multiple date ranges, lists of account segments, and report auditing. It also does all of this while being dynamically hot linked to General Ledger, ensuring that all numbers are timely, consistent, and complete.



Sage MAS 90 and Sage MAS 200

F9 Report Writer

"We converted to Sage MAS 200 [with F9] without so much as a hiccup, and suddenly all the data we needed to track sales was right there at our fingertips."

Kurt L. Peterson, Vice President of Finance
Oregon Chai

FEATURES

Graphical Presentation of Data	The presentation of your financial information can be enhanced by taking advantage of the graphics, text, and add-in capabilities of your spreadsheet.
AnyTimeSlice	You can create financial reports that span any period, even a one-week or one-day Profit and Loss (P&L), if desired.
DataPreLoad	By loading all or part of your chart of accounts into memory, you can speed recalculation times dramatically.
Multi-company Capabilities	Access General Ledger data from any number of companies simultaneously. Simplify consolidation across departments, divisions, or companies.
Drill Down	Find the origin of any number in your spreadsheet—drill down all the way to the individual transaction itself. For example, a total revenue figure can be sliced into revenue by department, by product, or by location, and that information can be pasted into your spreadsheet to augment your report.
Analyze	Report out of balance? With just one click, the F9 Analyze feature scans the entire spreadsheet, helping you troubleshoot your report by identifying missing or duplicate accounts.
Multiple Fiscal Years	You can access data from all Sage MAS 90 or 200 fiscal years using F9.
Report Wizard	You are guided through report creation step by step; in seconds, you can create a complete financial report with all F9 functions, formulas, and cell references intact.
Flexible Cell Reference	Suppose you have created a departmental report with one cell containing the department code "100", for example. Change "100" to "100, 200" and you have a two-department consolidated report. Change "100" to "*" and you have an all-departments report.
Create, Edit and Write Budgets	Read Budget and Write Budget buttons provide a mechanism for passing budgets back and forth between your General Ledger and spreadsheet. Spreadsheets are an optimal environment for creating and editing budgets, and F9 makes it easy.
Executive Information System (EIS) Functionality	With F9, you can drive F9 functionality from within a macro or Visual Basic program. Create dialog boxes, menus, and buttons, and use them to explore your accounting numbers, just as an executive information system would.
General Ledger Function Wizard	The General Ledger Function Wizard enhances productivity and the creation of reports. The formula inserts the appropriate number of cells in the spreadsheet to build an F9 report. The General Ledger formula contains the cell references required to complete the report.
Financial Entities	Financial Entities extends the utility of F9 formulas. General Ledger account numbers may be specified, using either the segment value or its description, as they appear in the chart of accounts. You can also define your own F9 Financial Entities.
WGL Formulas	WGL Formulas allow writing budget information back to the F9 Datamart's general ledger. A single cell of information can be written back to the budget files. While Budget Write Back is for batch updates, WGL allows accounts to be updated individually.
Account Enquiry	Just launch F9, select the accounts you want a balance from, and click Get Balance. With Account Enquiry, you can obtain account balances from your General Ledger without using your spreadsheet. Makes queries fast and easy.

F9 is a product of Systems Union and is distributed under license by Sage Software.



- ▶ MAS 90 Software
- ▶ MAS 90 Support
- ▶ MAS 90 Training

- ▶ MAS 200 Software
- ▶ MAS 200 Support
- ▶ MAS 200 Training

- ▶ MAS 90 and MAS 200 Live Demo
- ▶ Contact Us



Solutions behind your every move



56 Technology Drive • Irvine, CA 92618-2301 • 800-854-3415 • www.sagesoftware.com

©2005 Sage Software, Inc. All rights reserved. The Sage Software logo and the Sage Software products and service names mentioned herein are registered trademarks or trademarks of Sage Software, Inc., or its affiliated entities. All other trademarks are the property of their respective owners.

5086567 09/05 05-3855/0905